



FICHE DE PRESENTATION DES CASQUES HAUTE PERFORMANCE (NORME FIA 8860-2018)  
PRESENTATION FORM FOR ADVANCED HELMETS (FIA STANDARD 8860-2018)

**1. GENERALITES / GENERAL**

**101. CONSTRUCTEUR / MANUFACTURER**

**STILO S.R.L.**

- a) Adresse / Address **VIALE MAJNO 45, 20122 MILANO (MI) ITALY**
- b) Téléphone / Phone **+39 035 690 040**
- c) E-mail / E-mail **INFO@STILO.IT**

**102. DATE DE LA FICHE DE PRESENTATION / PRESENTATION FORM DATE**

Date / Date **01.02.2021**

**103. PHOTO DU CASQUE / PICTURE OF THE HELMET**



**104. MODELE ET VERSIONS / MODEL AND VERSIONS**

- a) Modèle / Model **WRC VENTI 8860 / TROPHY VENTI 8860**
- b) Type de casque / Type of helmet **Face Ouverte / Open-face**
- c) Avec protection balistique avancée / With advanced ballistic protection **Non / No**
- d) Versions disponibles / Available versions

Nom / Name	WRC VENTI 8860 WRC VENTI N 8860	Nom / Name	TROPHY VENTI 8860 TROPHY VENTI N 8860	Nom / Name
Description / Description	<b>WITH BOOM, WITH OR WITHOUT INTEGRATED PLUG</b>	Description / Description	<b>WITHOUT BOOM, WITH OR WITHOUT INTEGRATED PLUG</b>	Description / Description

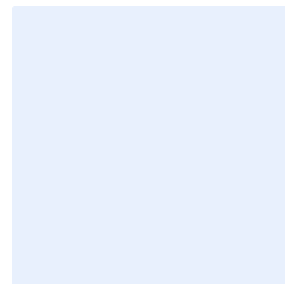
**A1)**



**B1)**



**C1)**



Marque  
Make **STILO**

Modèle  
Model **WRC VENTI 8860**  
**TROPHY VENTI 8860**

Homologation N°

**AH.017.21-O**

**105. TAILLES DISPONIBLES / SIZES AVAILABLE**

Tailles / Sizes

XS54, S55, S56, M57, M58, L59, XL60, XL61, XL62, XXL63, XXL64

**2. DETAILS DU CASQUE / DETAILS OF THE HELMET**

**201. VUES / VIEWS**

D1) Vue de face / Front view



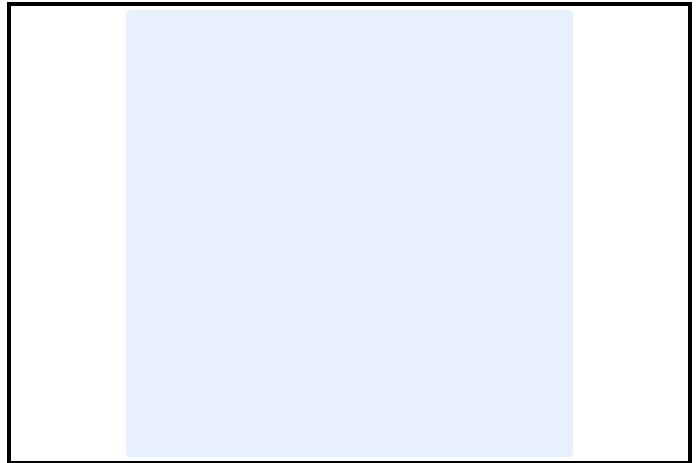
D2) Vue du Côté Droite / Right Side view



D3) Vue de haut / Top view



D4) Etiquette d'homologation / Homologation label



**202. NOMBRE ET POSITION DES TROUS DE VENTILATION / NUMBER AND POSITION OF VENTILATION HOLES**

Menton Chin	Top Top	Trous pour boire Drinking hole
Nombre de trous Number of holes	08 max	Oui/Yes
	Inclus Included	

**3. ACCESSOIRES DISPONIBLES / AVAILABLE ACCESSORIES**

E1) EAR CUPS Stilo TYPE WRC YA0002/EAR PADS



E2) Clip earplugs connector



E3) Side port components



E4) Adjustable Peak



E5) Visor Sunshield (short)



E6) Radio/Intercom Connection kits WRC DES/TROPHY DES



Marque  
Make **STILO**

Modèle  
Model

**WRC VENTI 8860**  
**TROPHY VENTI 8860**

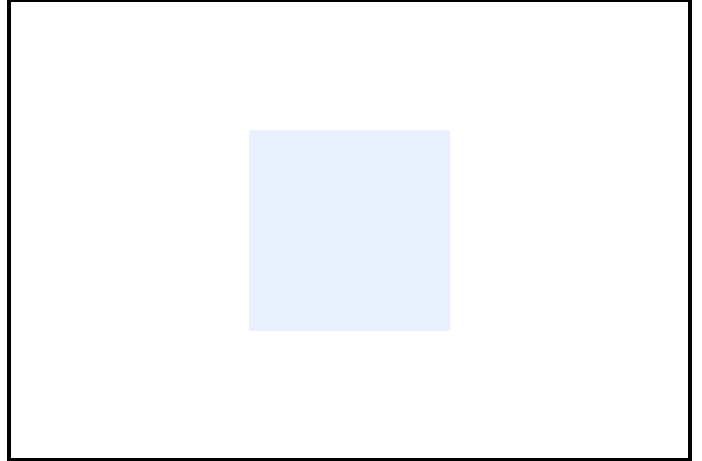
Homologation N°

**AH.017.21-O**

E7) Radio/Intercom Bluetooth Connector -WL-KEY

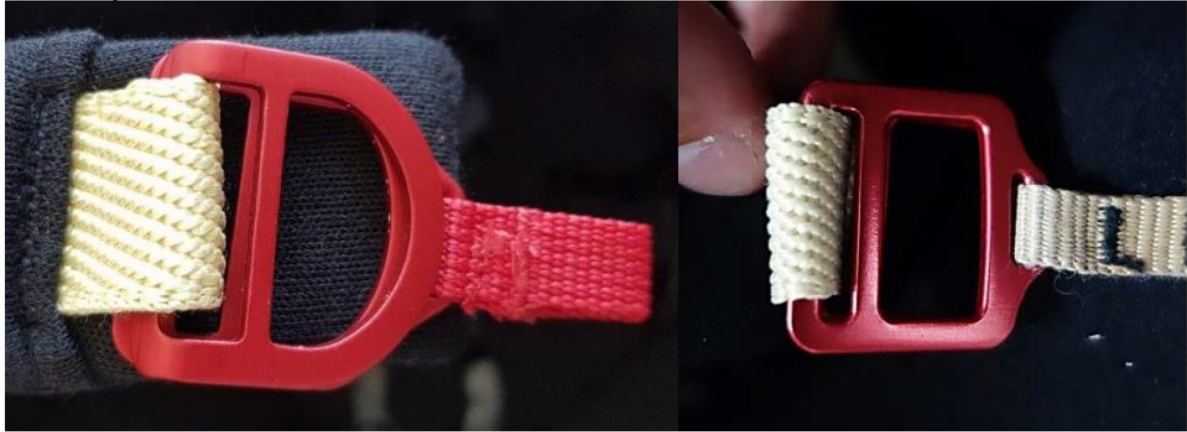


E8)

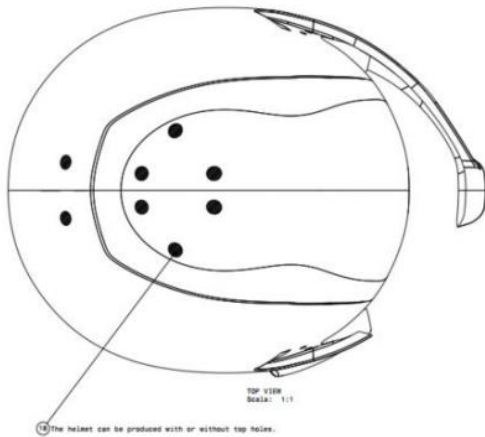


**INFORMATIONS COMPLEMENTAIRES / COMPLEMENTARY INFORMATION**

**Chin strap – 2 versions available**



**SHELL VENTILATION HOLES - optional**



Marque  
Make **STILO**

Modèle  
Model **WRC VENTI 8860**  
**TROPHY VENTI 8860**

Homologation N°

**AH.017.21-O**

**Modular top Air Inlet**

