



FEDERATION INTERNATIONALE DE L'AUTOMOBILE

Homologation N°

AH.015.20-O

09.10.2024

FICHE DE PRESENTATION DES CASQUES HAUTE PERFORMANCE (NORME FIA 8860-2018) PRESENTATION FORM FOR ADVANCED HELMETS (FIA STANDARD 8860-2018)

1. GENERALITES / GENERAL

101. CONSTRUCTEUR / MANUFACTURER

BELL RACING HELMETS INTERNATIONA

- a) Adresse / Address **PO BOX 90344, BLDG 310, ROAD 6204, 1062 SAKHIR, BAHRAIN**
- b) Téléphone / Phone **+973 1783 9999**
- c) E-mail / E-mail **ENGINEERING@BELLHELMETS.BH**

102. DATE DE LA FICHE DE PRESENTATION / PRESENTATION FORM DATE

Date / Date **03.03.2021**

103. PHOTO DU CASQUE / PICTURE OF THE HELMET



104. MODELE ET VERSIONS / MODEL AND VERSIONS

- a) Modèle / Model **HP10**
- b) Type de casque / Type of helmet **Face Ouverte / Open-face**
- c) Avec protection balistique avancée / With advanced ballistic protection **Non / No**
- d) Versions disponibles / Available versions

Nom / Name **HP10**

Nom / Name **HP10 RALLY**

Nom / Name

Description / Description

Description / Description **WITH RADIO KIT**

Description / Description

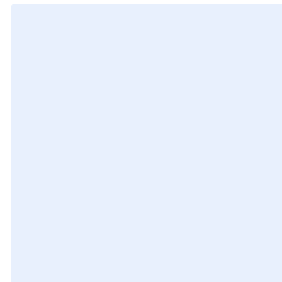
A1)



B1)



C1)



Marque
Make

**BELL RACING HELMETS
INTERNATIONAL**

Modèle
Model

HP10

Homologation N°

AH.015.20-O

105. TAILLES DISPONIBLES / SIZES AVAILABLE

Tailles / Sizes

54, 55, 56, 56+, 57-, 57, 58, 59, 59+,60, 61, 61+

2. DETAILS DU CASQUE / DETAILS OF THE HELMET

201. VUES / VIEWS

D1) Vue de face / Front view



D2) Vue du Côté Droite / Right Side view



D3) Vue de haut / Top view



D4) Etiquette d'homologation / Homologation label



202. NOMBRE ET POSITION DES TROUS DE VENTILATION / NUMBER AND POSITION OF VENTILATION HOLES

Menton Chin	Top Top	Trous pour boire Drinking hole
Nombre de trous Number of holes	4	aucun sélectionné

3. ACCESSOIRES DISPONIBLES / AVAILABLE ACCESSORIES

E1) [MPTRX] Half chin bar carbon-HP10&MAG-10 carbon



E2) [MPFEC] Peak - HP10&MAG-10 carbon



E3) [H3NZN] Injection - peak HP10&MAG-10



E4) [H2REN] Adjustable sunscreen M10L 1.7mm



E5) [H3WJA] Side cover-female connector HP10&MAG-10



E6) [MPSTX] & [MPYBO] Flat side cover Left/right



Marque
Make

**BELL RACING HELMETS
INTERNATIONAL**

Modèle
Model

HP10

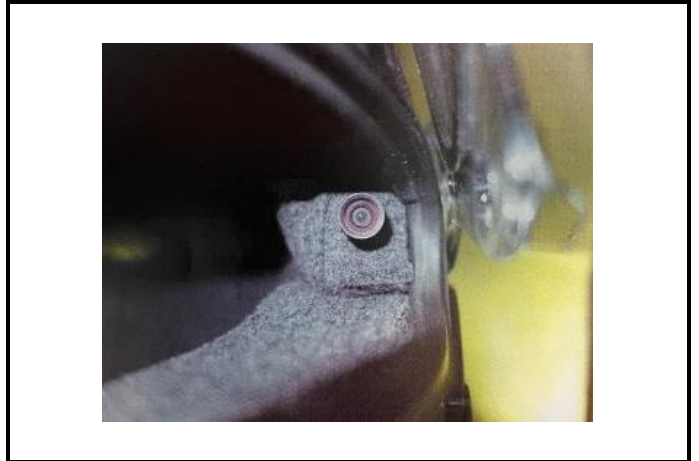
Homologation N°

AH.015.20-O

E7) **Helmet Radio kit PRO**



E8) **IN-HELMET-CAMERA DRIVER'S EYE 2021-LW**



E9) **Full Chin Bar (with tool-less screw)**



E10) **In-helmet camera driver's Gen.2 - Narrow**



E11) **In-helmet camera driver's Gen.2 - Wide**



E12) **Wireless Module and Side Cover**



Marque
Make

**BELL RACING HELMETS
INTERNATIONAL**

Modèle
Model

HP10

Homologation N°

AH.015.20-O

E13) **INTEGRATED HELMET CAMERA**



Note: only the helmet cameras originally integrated by BELL are approved by FIA. It is not allowed to modify the existing cameras or its integration. The use of any other camera than the ones originally provided by BELL is not allowed.

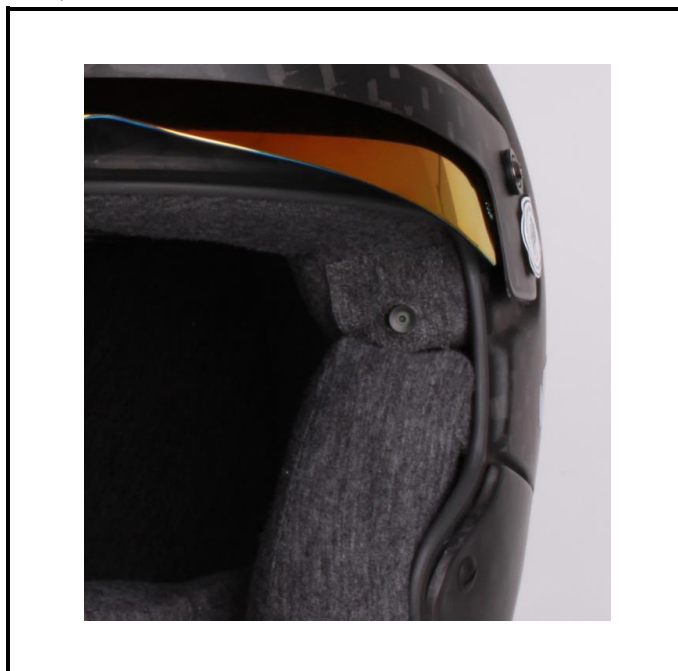
E14) **Tool-less screw**



E15) **Full Chin Bar (with tool-less screw)**



E16) **Helmet Camera DE GEN2.5**



Marque
Make

**BELL RACING HELMETS
INTERNATIONAL**

Modèle
Model

HP10

Homologation N°

AH.015.20-O

E17) **ALTERNATIVE CHIN STRAP V23**



E18) **Half Chin Bar-Short**



E19) **Wireless Module and Side Cover**



E20) **Forced air intake-10 series**



E19) **Forced air intake-10 series Nozzels**



E20) **Forced air intake-10 series**



Marque
Make

**BELL RACING HELMETS
INTERNATIONAL**

Modèle
Model

HP10

Homologation N°

AH.015.20-O

INFORMATIONS COMPLEMENTAIRES / COMPLEMENTARY INFORMATION