



FEDERATION INTERNATIONALE DE L'AUTOMOBILE

Homologation N°

AH.011.19-C

08.12.2023

FICHE DE PRESENTATION DES CASQUES HAUTE PERFORMANCE (NORME FIA 8860-2018) PRESENTATION FORM FOR ADVANCED HELMETS (FIA STANDARD 8860-2018)

1. GENERALITES / GENERAL

101. CONSTRUCTEUR / MANUFACTURER

STILO S.R.L.

- a) Adresse
Address **VIALE MAJNO 45, 20122 MILANO (MI) ITALY**
- b) Téléphone
Phone **+39 035690040**
- c) E-mail
E-mail **INFO@STILO.IT**

102. DATE DE LA FICHE DE PRESENTATION / PRESENTATION FORM DATE

Date / Date **09.02.2023**

103. PHOTO DU CASQUE / PICTURE OF THE HELMET



104. MODELE ET VERSIONS / MODEL AND VERSIONS

- a) Modèle
Model **ST5 8860**
- b) Type de casque
Type of helmet **Intégral / Full-face**
- c) Avec protection balistique avancée
With advanced ballistic protection **Non / No**
- d) Versions disponibles
Available versions

Nom **ST5 F 8860**
Name **ST5 GT 8860**

Nom **ST5 NF 8860**
Name **ST5 NGT 8860**

Nom **ST5 R 8860**
Name **ST5 NR 8860**

Description **WITH INTEGRATED PLUGS**
Description

Description **WITHOUT INTEGRATED PLUGS**
Description

Description **WITH WIDER EYEPORT.
WITH OR W/O
INTEGRATED PLUGS**
Description

A1)



B1)



C1)



Marque
Make **STILO**

Modèle
Model **ST5 8860**

Homologation N°

AH.011.19-C

105. TAILLES DISPONIBLES / SIZES AVAILABLE

Tailles / Sizes

XS54, S55, S56, M57, M58, L59, XL60, XL,61, XL62, XXL63, XXL64

2. DETAILS DU CASQUE / DETAILS OF THE HELMET

201. VUES / VIEWS

D1) Vue de face / Front view



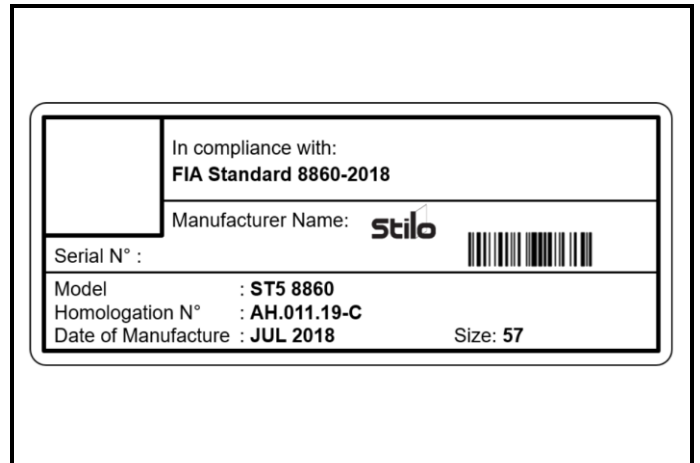
D2) Vue du Côté Droite / Right Side view



D3) Vue de haut / Top view



D4) Etiquette d'homologation / Homologation label



202. NOMBRE ET POSITION DES TROUS DE VENTILATION / NUMBER AND POSITION OF VENTILATION HOLES

	Menton Chin		Top Top		Trous pour boire Drinking hole
Nombre de trous Number of holes	8 max	Nombre de trous Number of holes	10 max	Inclus Included	Oui/Yes

3. ACCESSOIRES DISPONIBLES / AVAILABLE ACCESSORIES

E1) EAR CUPS / EAR PADS / intercoms



E2) Clip earplugs connector



E3) Side port components examples



E4) Peak & shoe visor



E5) Top Air & forced ventilation for CHIN and TOP



E6) Aerodynamics and ventilations



Marque
Make **STILO**

Modèle
Model **ST5 8860**

Homologation N°

AH.011.19-C

E7) Radio/Intercom Bluetooth Connector -WL-KEY



E8) In-helmet camera DE GEN 2.5



INFORMATIONS COMPLEMENTAIRES / COMPLEMENTARY INFORMATION

INTEGRATED HELMET CAMERA

Note: only the helmet cameras originally integrated by STILO are approved by FIA.
It is not allowed to modify the existing cameras or its integration.

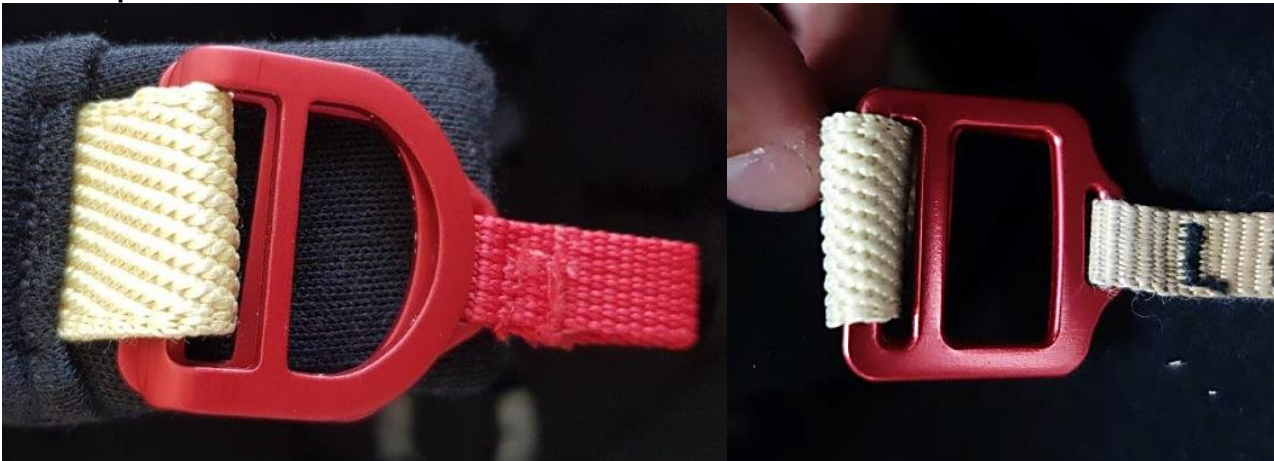
The use of any other camera than the ones originally provided by STILO is not allowed.



Helmet skirt & Chin flap



Chin strap – 2 versions available



OPTIONAL VENTILATION HOLES – TOP and CHIN BAR

Marque
Make

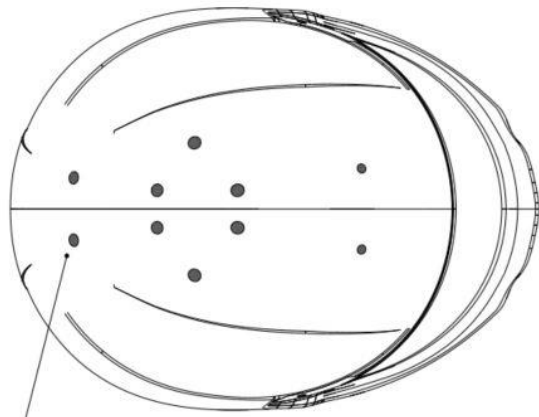
STILO

Modèle
Model

ST5 8860

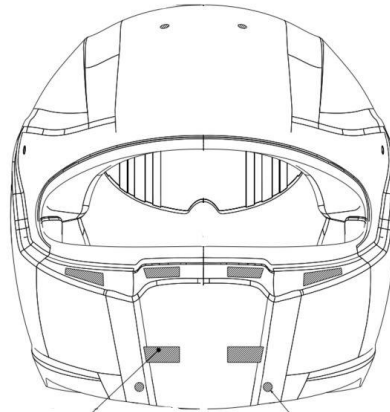
Homologation N°

AH.011.19-C



TOP VIEW
Scale: 1:1

18) The helmet can be produced with (all/partially) or without top holes.



18) optional holes
19) The helmet can be produced with (all/partially) or without front holes.