



FEDERATION INTERNATIONALE DE L'AUTOMOBILE

Homologation N°

AH.010.19-C-ABP

08.12.2023

FICHE DE PRESENTATION DES CASQUES HAUTE PERFORMANCE (NORME FIA 8860-2018) PRESENTATION FORM FOR ADVANCED HELMETS (FIA STANDARD 8860-2018)

1. GENERALITES / GENERAL

101. CONSTRUCTEUR / MANUFACTURER

STILO S.R.L.

- a) Adresse / Address **VIALE MAJNO 45, 20122 MILANO (MI) ITALY**
- b) Téléphone / Phone **+39 035690040**
- c) E-mail / E-mail **INFO@STILO.IT**

102. DATE DE LA FICHE DE PRESENTATION / PRESENTATION FORM DATE

Date / Date **31-05-2019**

103. PHOTO DU CASQUE / PICTURE OF THE HELMET



104. MODELE ET VERSIONS / MODEL AND VERSIONS

- a) Modèle / Model **ST5 8860 ABP**
- b) Type de casque / Type of helmet **Intégral / Full-face**
- c) Avec protection balistique avancée / With advanced ballistic protection **Oui / Yes**
- d) Versions disponibles / Available versions

Nom / Name **ST5 F 8860
ST5 GT 8860**

Nom / Name **ST5 NF 8860
ST5 NGT 8860**

Nom / Name **ST5 R 8860
ST5 NR 8860**

Description / Description **WITH INTEGRATED PLUGS**

Description / Description **WITHOUT INTEGRATED PLUGS**

Description / Description **WITH WIDER EYEPORT.
WITH OR W/O INTEGRATED PLUGS**

A1)



B1)



C1)



Marque
Make **STILO**

Modèle
Model **ST5 8860 ABP**

Homologation N°

AH.010.19-C-ABP

105. TAILLES DISPONIBLES / SIZES AVAILABLE

Tailles / Sizes

XS54, S55, S56, M57, M58, L59, XL60, XL,61, XL62, XXL63, XXL64

2. DETAILS DU CASQUE / DETAILS OF THE HELMET

201. VUES / VIEWS

D1) Vue de face / Front view



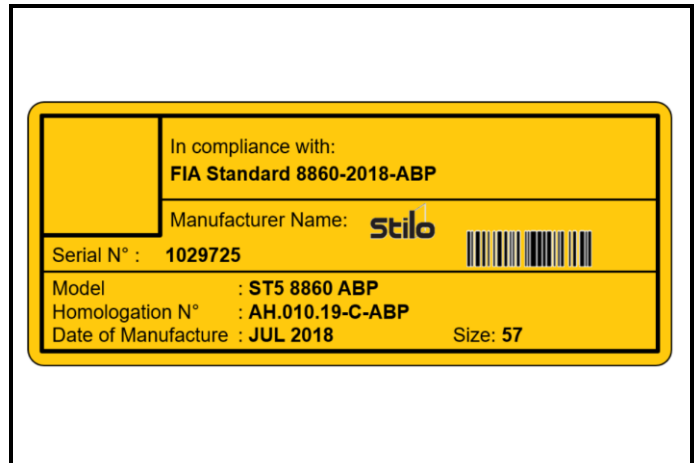
D2) Vue du Côté Droite / Right Side view



D3) Vue de haut / Top view



D4) Etiquette d'homologation / Homologation label



202. NOMBRE ET POSITION DES TROUS DE VENTILATION / NUMBER AND POSITION OF VENTILATION HOLES

	Menton Chin		Top Top		Trous pour boire Drinking hole
Nombre de trous Number of holes	8 max	Nombre de trous Number of holes	10 max	Inclus Included	Oui/Yes

3. ACCESSOIRES DISPONIBLES / AVAILABLE ACCESSORIES

E1) EAR CUPS / EAR PADS / intercoms



E2) Clip earplugs connector



E3) Side port components examples



E4) Peak & shoe visor



E5) Top Air & forced ventilation for CHIN and TOP



E6) Aerodynamics and ventilations



Marque
Make **STILO**

Modèle
Model **ST5 8860 ABP**

Homologation N°

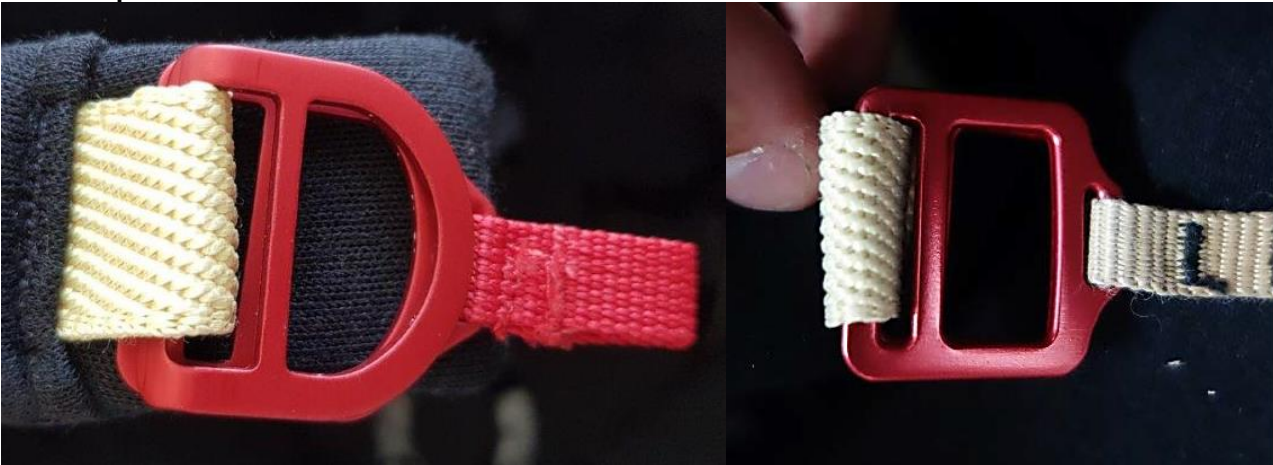
AH.010.19-C-ABP

INFORMATIONS COMPLEMENTAIRES / COMPLEMENTARY INFORMATION

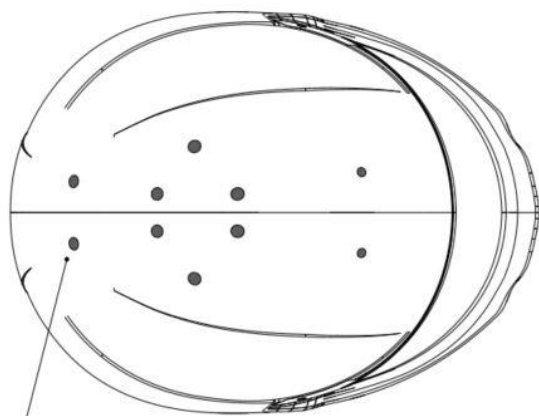
Helmet skirt & Chin flap



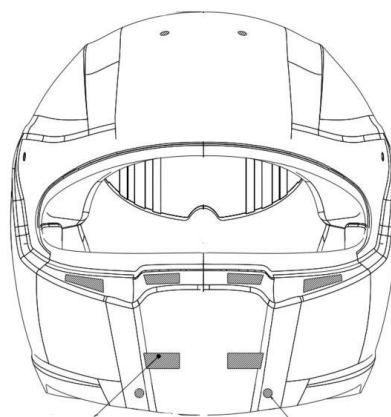
Chin strap – 2 versions available



OPTIONAL VENTILATION HOLES – TOP and CHIN BAR



13) The helmet can be produced with (all/partially) or without top holes.



14) optional holes
15) The helmet can be produced with (all/partially) or without front holes.

Marque
Make **STILO**

Modèle
Model **ST5 8860 ABP**

Homologation N°

AH.010.19-C-ABP

Helmet Camera DE GEN2.5LW

