



FICHE DE PRESENTATION DES CASQUES HAUTE PERFORMANCE (NORME FIA 8860-2018) PRESENTATION FORM FOR ADVANCED HELMETS (FIA STANDARD 8860-2018)

1. GENERALITES / GENERAL

101. CONSTRUCTEUR / MANUFACTURER

STILO S.R.L.

- a) Adresse Address VIALE MAJNO 45, 20122 MILANO (MI) ITALY
b) Téléphone Phone +39 035690040
c) E-mail E-mail INFO@STILO.IT

102. DATE DE LA FICHE DE PRESENTATION / PRESENTATION FORM DATE

Date / Date 01.04.2019

103. PHOTO DU CASQUE / PICTURE OF THE HELMET



104. MODELE ET VERSIONS / MODEL AND VERSIONS

- a) Modèle Model ST5 8860 ZERO ABP
b) Type de casque Type of helmet Intégral / Full-face
c) Avec protection balistique avancée With advanced ballistic protection Oui / Yes
d) Versions disponibles Available versions

Table with 3 columns: Nom/Name, Description, and another set of Nom/Name and Description for different helmet versions.

A1)



B1)



C1)



Marque  
Make **STILO**

Modèle  
Model **ST5 8860 ZERO ABP**

Homologation N°

**AH.004.18-C-ABP**

**105. TAILLES DISPONIBLES / SIZES AVAILABLE**

Tailles / Sizes

XS54, S55, S56, M57, M58, L59, XL60, XL61, XL62, XXL63, XXL64

**2. DETAILS DU CASQUE / DETAILS OF THE HELMET**

**201. VUES / VIEWS**

D1) Vue de face / Front view



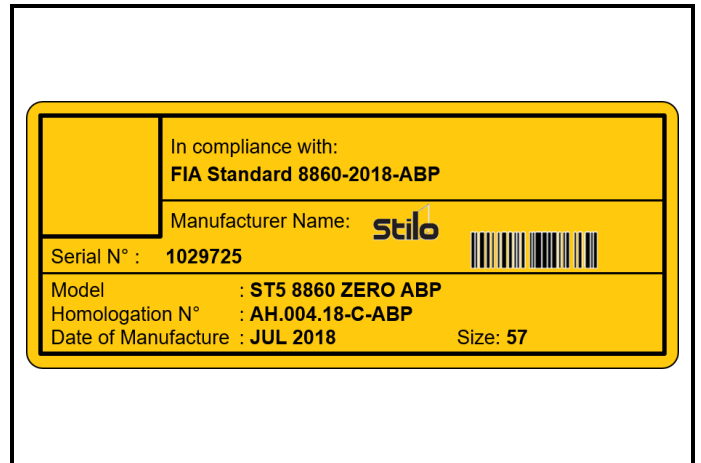
D2) Vue du Côté Droite / Right Side view



D3) Vue de haut / Top view



D4) Etiquette d'homologation / Homologation label



**202. NOMBRE ET POSITION DES TROUS DE VENTILATION / NUMBER AND POSITION OF VENTILATION HOLES**

	Menton Chin		Top Top		Trous pour boire Drinking hole
Nombre de trous Number of holes	<b>6</b>	Nombre de trous Number of holes	<b>10</b>	Inclus Included	<b>Oui/Yes</b>

**3. ACCESSOIRES DISPONIBLES / AVAILABLE ACCESSORIES**

E1) EAR CUPS / EAR PADS / intercoms



E2) Clip earplugs connector



E3) Side port components examples



E4) Peak & shoe visor



E5) Top Air & forced ventilation for CHIN and TOP



E6) Aerodynamics and ventilations

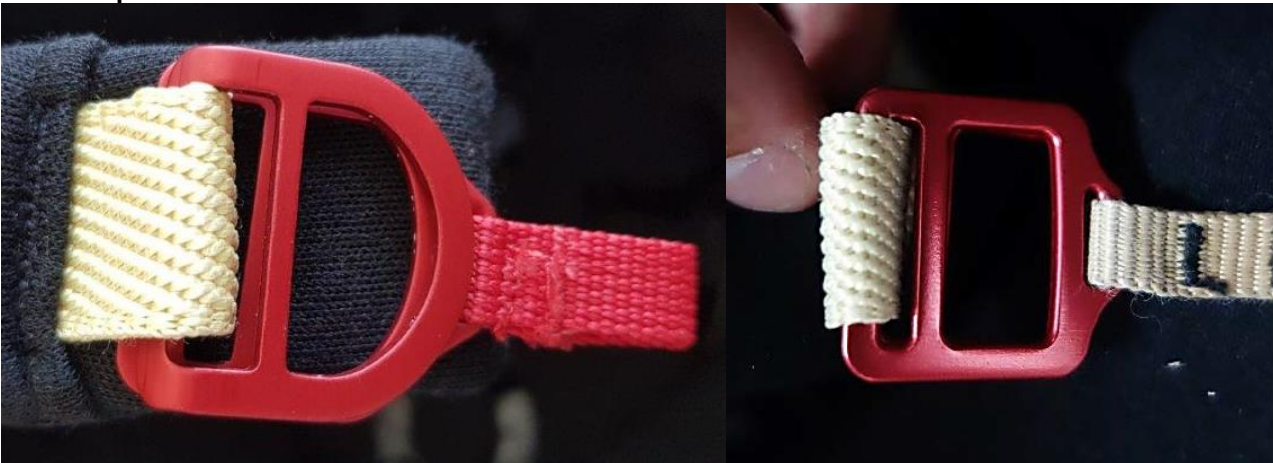


**INFORMATIONS COMPLEMENTAIRES / COMPLEMENTARY INFORMATION**

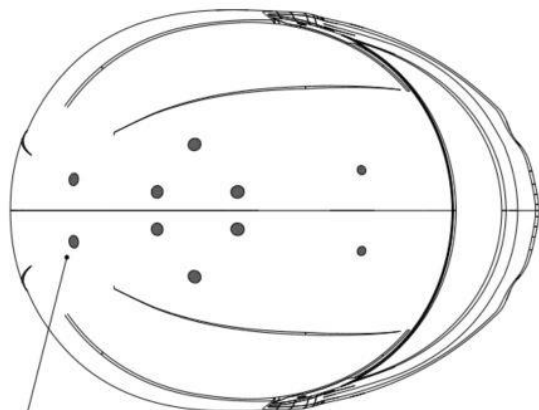
**Helmet skirt & Chin flap**



**Chin strap – 2 versions available**

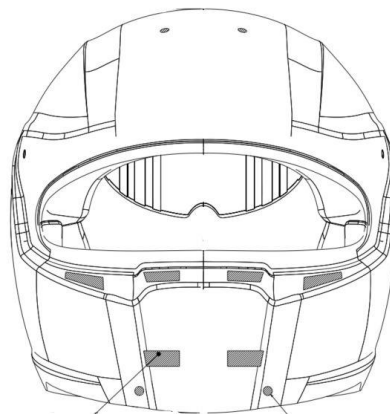


**OPTIONAL VENTILATION HOLES – TOP and CHIN BAR**



TOP VIEW  
Scale: 1:1

15) The helmet can be produced with (all/partially) or without top holes.



16) optional holes

15) The helmet can be produced with (all/partially) or without front holes.

Marque  
Make **STILO**

Modèle  
Model **ST5 8860 ZERO ABP**

Homologation N°

**AH.004.18-C-ABP**

**Helmet Camera DE GEN2.5LW**

