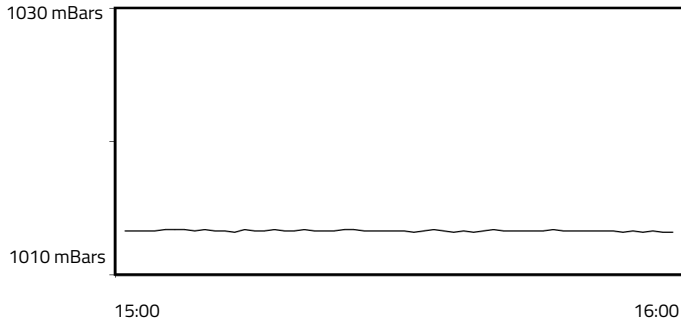


## FORMULA 1 LENOVO JAPANESE GRAND PRIX 2025 - Suzuka

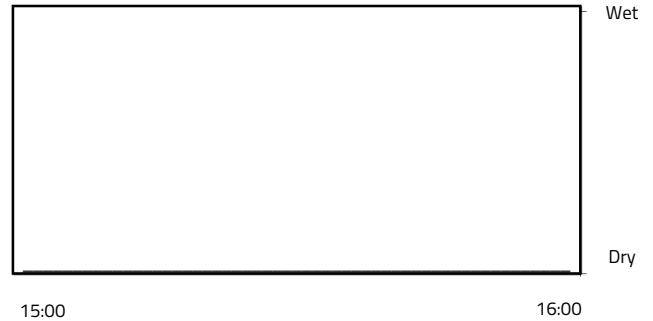
### Weather Report - Saturday 5 April 2025

#### AIR PRESSURE

Maximum: 1013.4 mBars Minimum: 1013.2 mBars

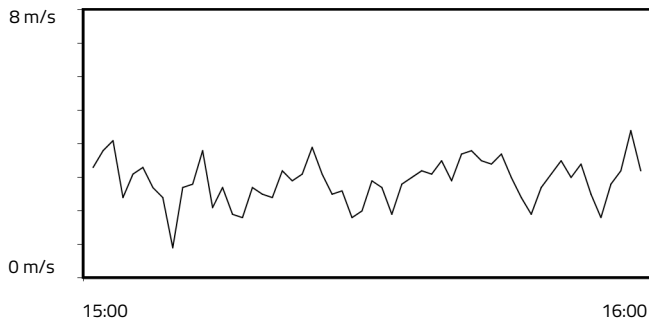


#### RAINFALL

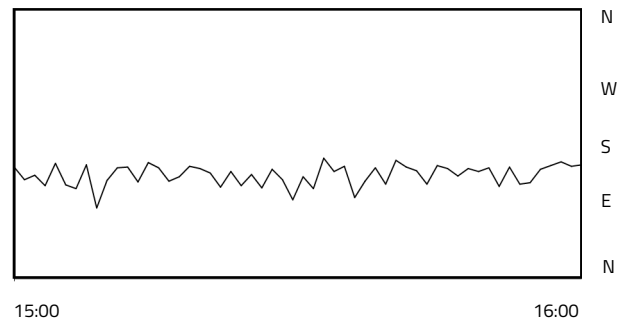


#### WIND SPEED

Maximum: 4.4 m/s Minimum: 0.9 m/s

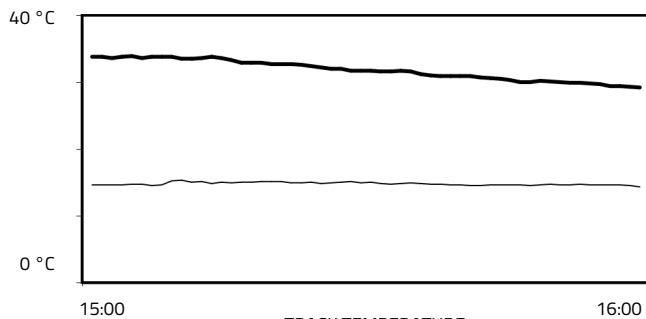


#### WIND DIRECTION



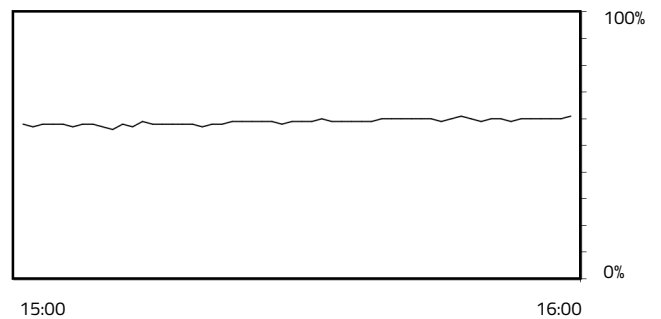
#### TEMPERATURE

Air Maximum: 15.4°C Air Minimum: 14.4°C  
Track Maximum: 34°C Track Minimum: 29.3°C



#### RELATIVE HUMIDITY

Maximum: 61.0% Minimum: 56.0%



— TRACK TEMPERATURE  
— AIR TEMPERATURE

Weather Data Supplied by FIA