

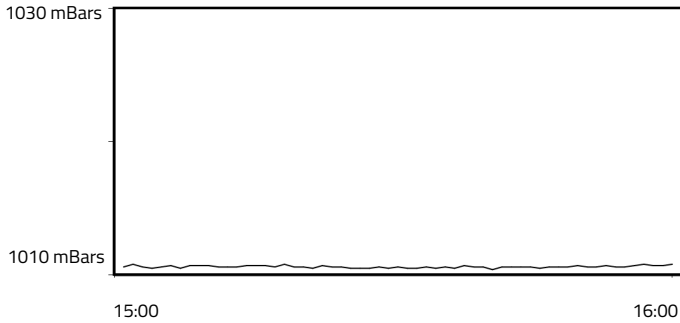


# FORMULA 1 LENOVO JAPANESE GRAND PRIX 2025 - Suzuka

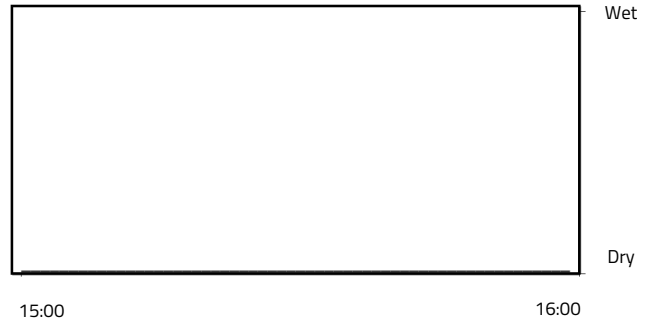
## Weather Report - Friday 4 April 2025

### AIR PRESSURE

Maximum: 1010.8 mBars Minimum: 1010.4 mBars

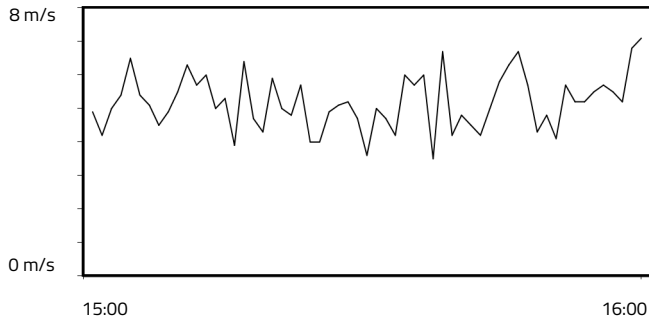


### RAINFALL

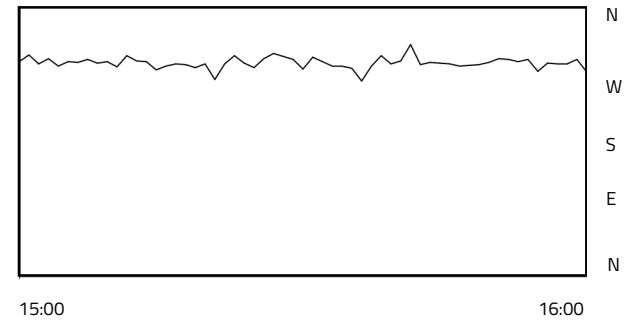


### WIND SPEED

Maximum: 7.1 m/s Minimum: 3.5 m/s

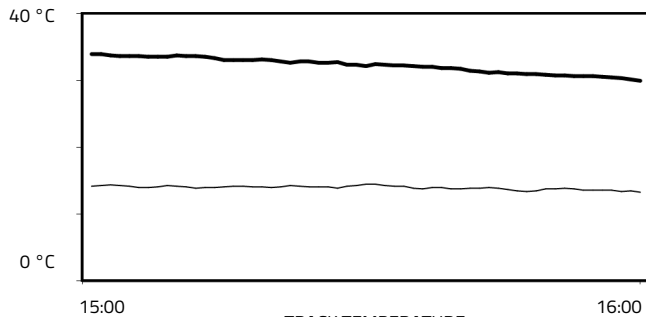


### WIND DIRECTION



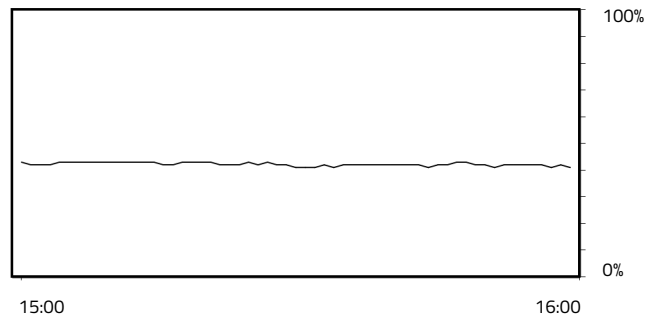
### TEMPERATURE

Air Maximum: 14.5°C Air Minimum: 13.3°C  
Track Maximum: 34°C Track Minimum: 30°C



### RELATIVE HUMIDITY

Maximum: 43.0% Minimum: 41.0%



— TRACK TEMPERATURE  
— AIR TEMPERATURE

Weather Data Supplied by FIA