



FORMULA 1 LENOVO JAPANESE GRAND PRIX 2025 - Suzuka

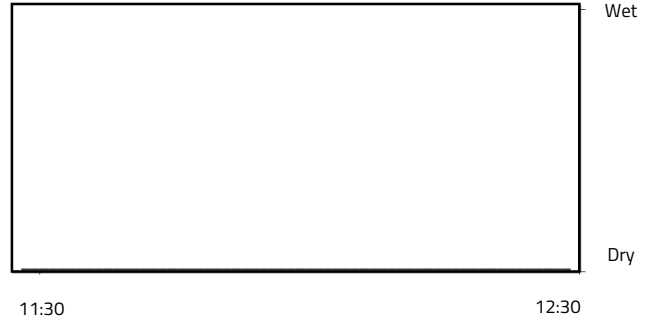
Weather Report - Friday 4 April 2025

AIR PRESSURE

Maximum: 1012 mBars Minimum: 1011.4 mBars

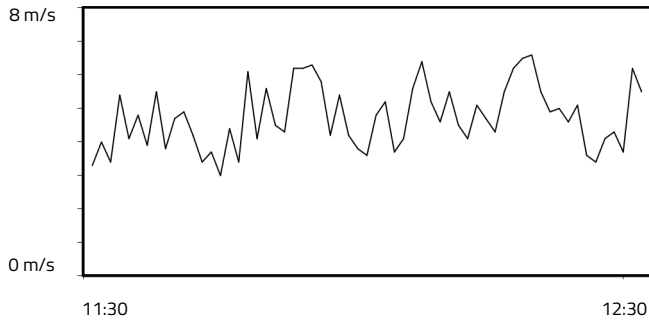


RAINFALL

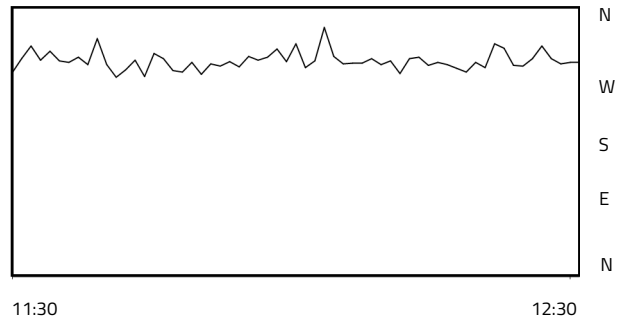


WIND SPEED

Maximum: 6.6 m/s Minimum: 3.0 m/s

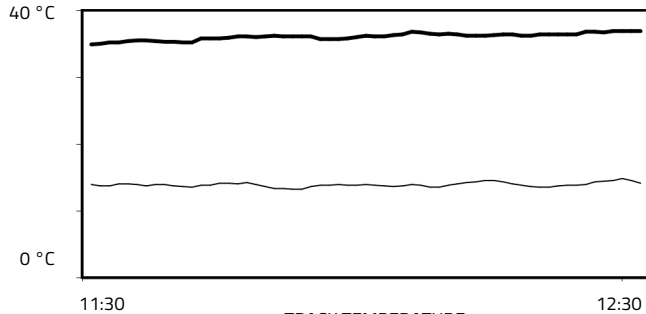


WIND DIRECTION



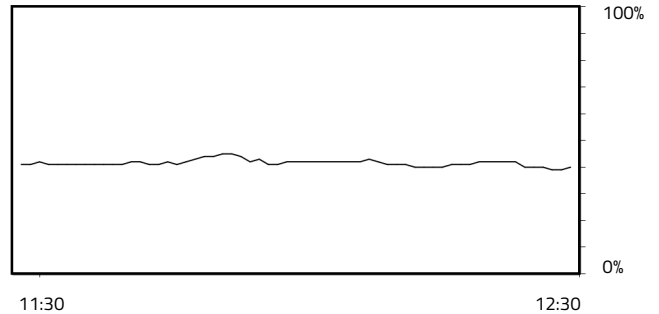
TEMPERATURE

Air Maximum: 14.9°C Air Minimum: 13.3°C
Track Maximum: 37°C Track Minimum: 35°C



RELATIVE HUMIDITY

Maximum: 45.0% Minimum: 39.0%



— TRACK TEMPERATURE
— AIR TEMPERATURE

Weather Data Supplied by FIA