



DECISION OF THE ENDURANCE COMMITTEE



To: Teams Manufacturers
Category: LM P1 LM P2 LM GTE Pro LM GTE Am
Decision N°: **16-D0004-LMP1-H-Amended**
Date: **06/04/2016**
Re: Refuelling – LMP1-H

Mission concerned

Article: Appendix A

- 2016 FIA World Endurance Championship Sporting Regulations
 2016 Technical Regulations for Prototypes LMP1
 Internal Regulations of the FIA Endurance Commission

Decision

Following:

- the shared intention to equalize the refuelling time of full tank of LMP1 Hybrids Diesel versus Gasoline
- the dedicated tests achieved on March 3rd,
- the co-signed report of the tests,

we feel necessary to summarize by the following drawings (below page 2,3 & 4) the functional dimensions which will be mandatory for 2016 LMP1-H refuelling equipment.

Following additional consideration about functional details on the drawings, please find this Amended version of the Endurance Committee decision (mention of diameters, general tolerances, some not mandatory details , ...)

Period of validity/application of the decision

This decision comes into effect:

- with immediate application
 from:
 from the following event :

And is applicable:

- until further notice
 for the above-mentioned event(s) only

Committee Members

Denis CHEVRIER

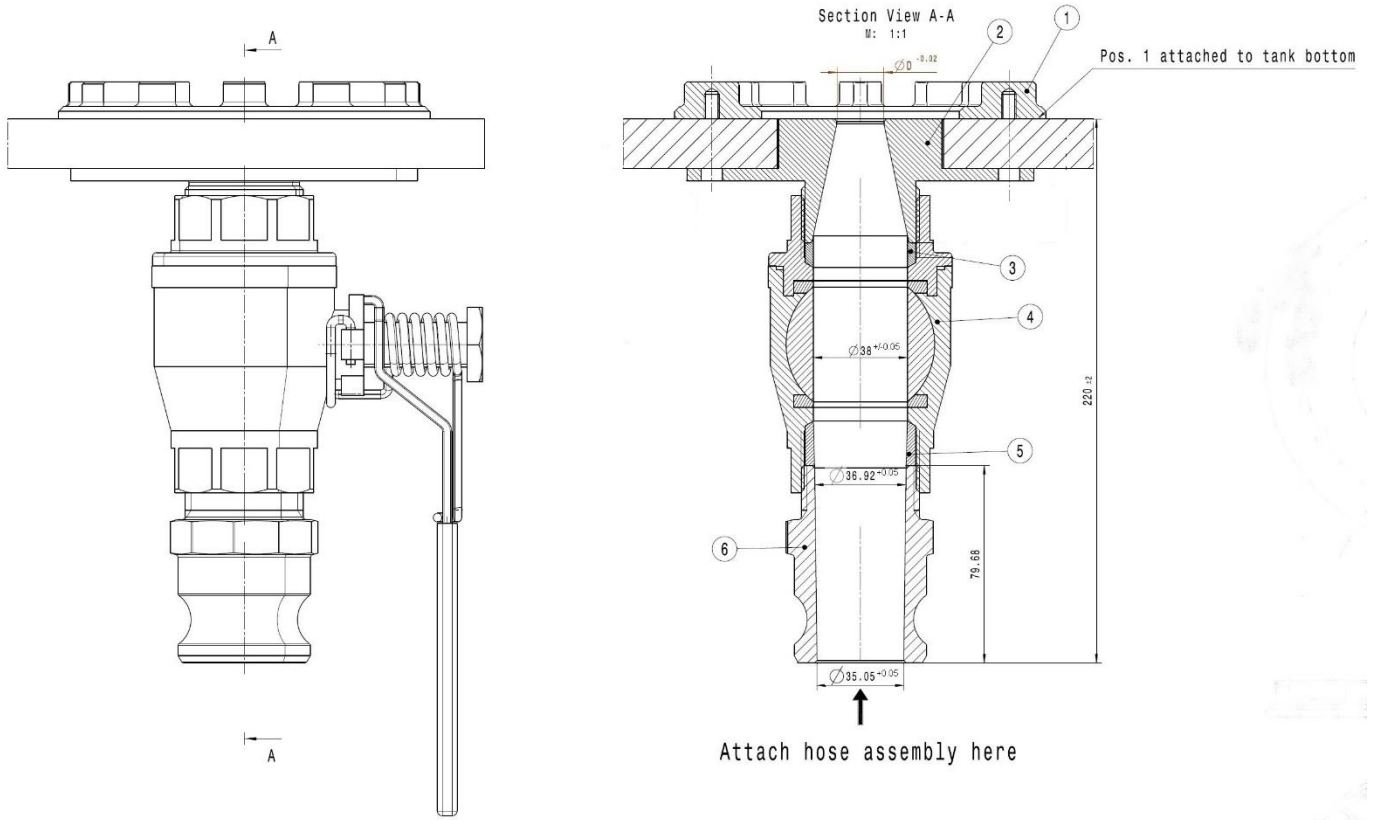
Vincent BEAUMESNIL

Any decision taken by the Endurance Committee is not subject to appeal, in accordance with Article 4.11.2 b of the WEC Sporting Regulations.

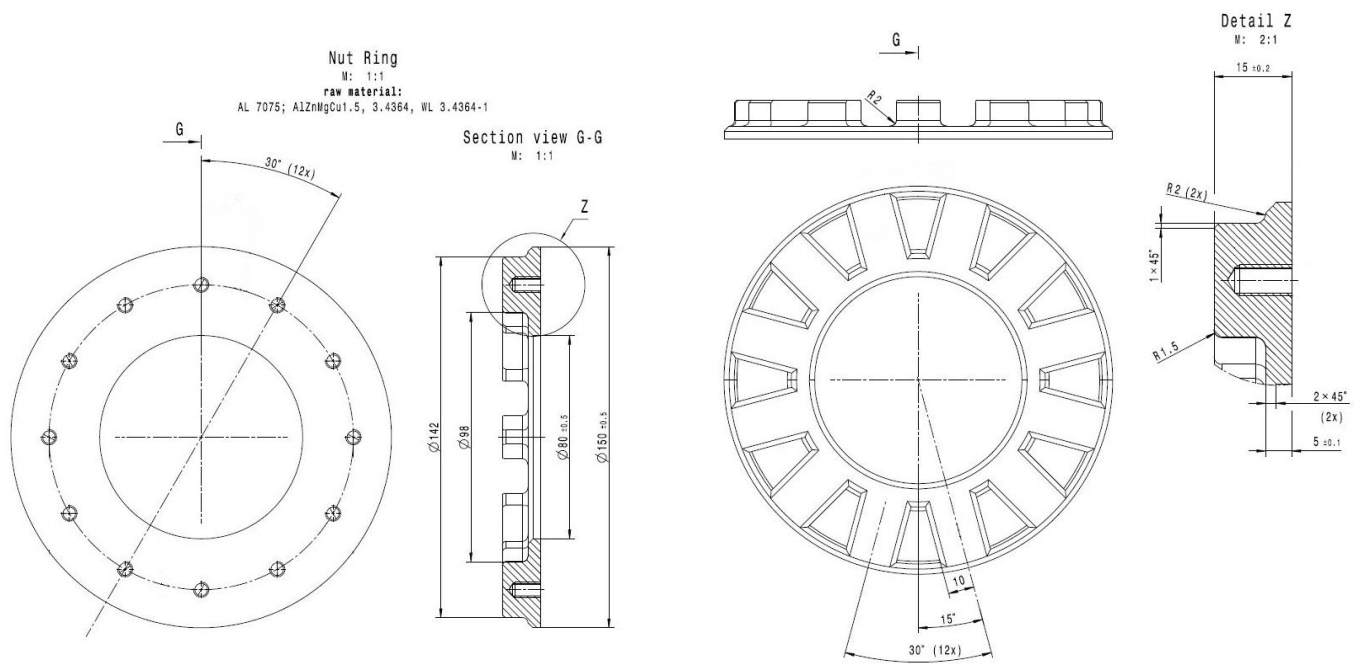
This decision is available on the following websites:

- <http://www.fia.com/events/world-endurance-championship/season-2016/fia-endurance-committee>
- <http://sport.lemans.org/login.php>

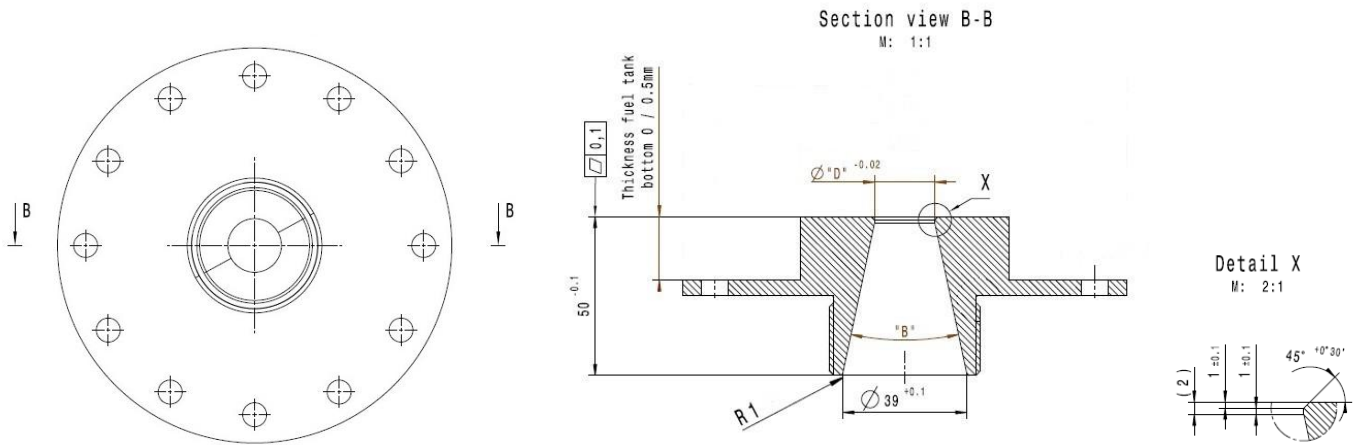
1/ GENERAL OVERVIEW



2/ NUT RING

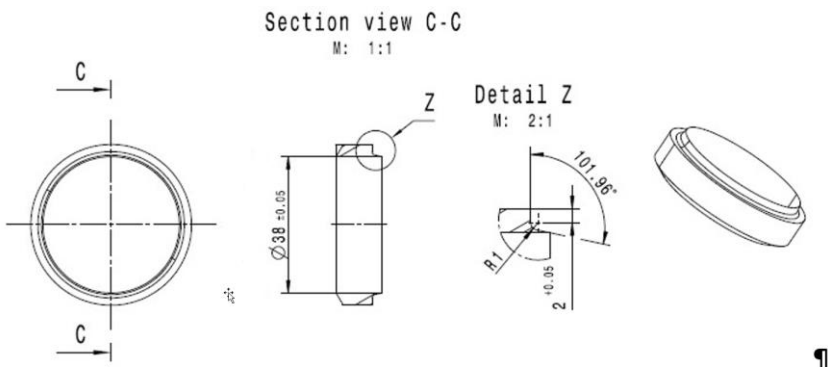


3/ RESTRICTOR

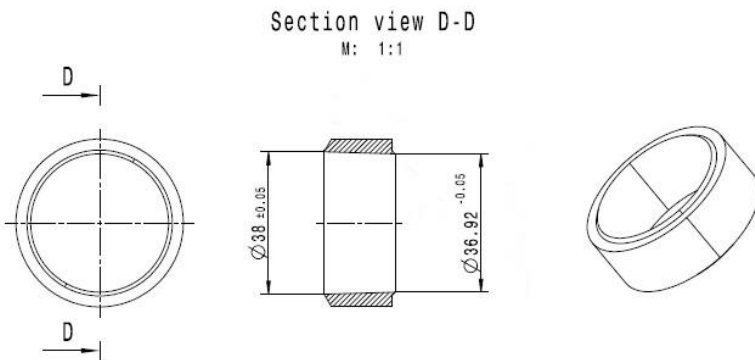


D [mm]	B [°]	Comment
19.00	23.92	Diesel LM 2016
22.45	19.90	Petrol WEC cold / warm 2016
20.75	21.89	Diesel WEC warm 2016
20.80	21.83	Diesel WEC cold 2016
20.50	22.18	Petrol LM 2016

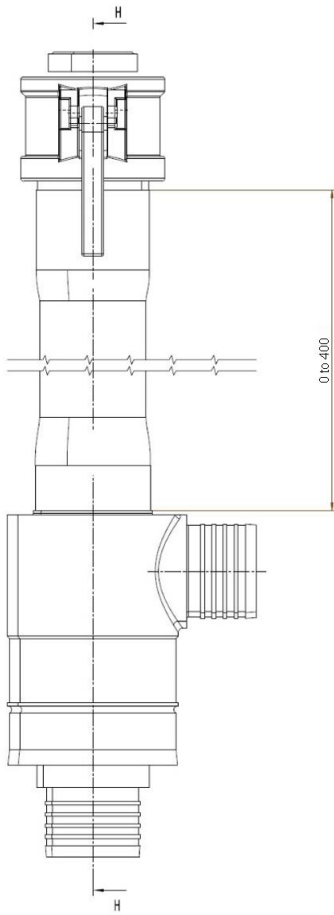
4/ ADAPTOR RING – Pos. 3



5/ ADAPTOR RING – Pos. 5

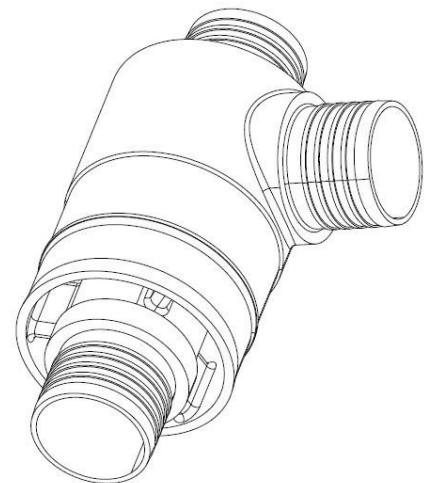
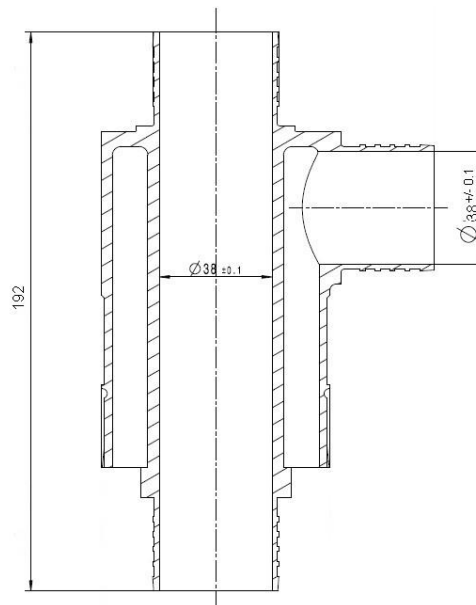
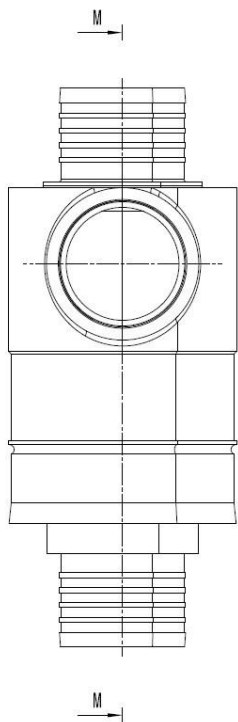


6/ HOSE ASSEMBLY



7/ DIVISOR

Section view M-M
M: 1:1



8/ GENERAL TOLERANCE

For all drawings, if no tolerance is specified please use norm ISO 2768.