



## FESG1800E

### Electronic Plumbed-In Fire Extinguisher System Installation Instructions

This is an FX G-TEC 1800E +ADS Advanced Discharge System - homologated gas fire extinguisher system. To maintain optimum performance all systems should be serviced every two years.

**IMPORTANT** Please read the following before commencing any installation.

1. The control box does not contain a battery; you will need to supply a 9-volt PP3 battery.
2. Do not plug the loom into the Firing Head until the firing button connections are made.
3. Do not arm your system until you have completed the battery and circuit test as indicated on the control box instructions supplied with the control box.

#### **KIT CONTENTS**

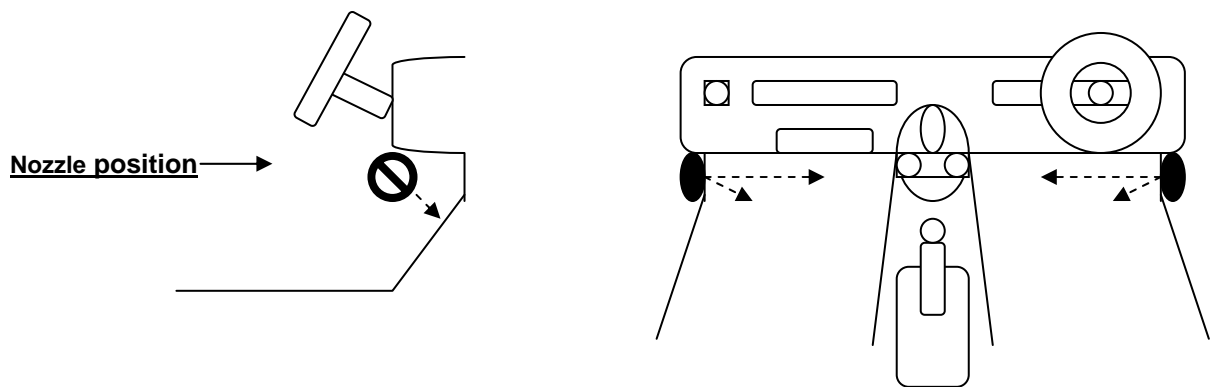
Qty	Description	Drawing	Item No	Part No
1	Cylinder		1	CYL-IX00-E
1	6mm Tubing 5mtr		8	FE-DECA-6
2	Cockpit Nozzle Colour Code (Silver)		9	FE-NOZ-TWIN
2	Engine Nozzle		10	FE-NOZ-X
1	External Firing Button		11	FES-EXT-FB
1	Control Box		12	FES-FC-BOX
1	Internal Firing Button		13	FES-INT-FB
3	Tee Connector 6-6		15	FE-T-CON-6-6
1	Y Connector 6-6 Optional		16	FE-Y-CON-6-6
8	Tube clips			
1	'E' Label			

#### **INSTALLATION INSTRUCTIONS**

1. **BOLT** the cylinder-mounting cradle to the vehicle structure **SECURELY**.
2. Mount the electronic control box in a suitable location.
3. Mount the firing switches to enable operation **in accordance with current regulations**. One inside the vehicle within easy reach of the driver (and co-driver where applicable) (18.75mm diameter hole) and one on an outside panel (22.5mm diameter hole) adjacent to the electrical cut out switch. Apply the E Decal label adjacent to the external firing switch.
4. **WIRING**. Wiring harness has 2-paired cables with bared ends. (A) Firing switches 1 & 2 are connected to the black pairs of wires. Install 9V PP3 type dry battery into control box (note battery is not supplied).
5. **PLUMBING** - IMPORTANT Please note 6mm piping supplied fits into various fittings in accordance with assembly drawing no FX G-TEC IX00E ensure that all push in connections are secure. Note that the supply from the firing head should enter the centre branch of the T connector and exit the two outlets of the T connector into nozzles and two cockpit nozzles.

**Engine Nozzles** should be positioned to enable the spray cone to cover areas at most risk, for example the engine fuel system and turbo. If in doubt ask your local MSA/FIA scrutineer to advise. Hole size for nozzle 12.5mm Diameter.

**Cockpit Nozzles as Homologated** Mount two cockpit nozzles on the front door pillars pointing horizontally towards the centre of the car, just below the bottom line of the dashboard. Each nozzle has two colour coded jets (silver), angle each nozzle at 45°, one jet pointing horizontally across the car towards the centre, the other jet point into the footwell at 45° to the horizontal. Hole size for nozzle 13.5mm Diameter.



**THIS IS A SAFETY ITEM! CHECK YOUR INSTALLATION CAREFULLY! IF IN DOUBT ASK!**

**Please Note:** FEV FX G-TEC systems are tested and rated for a temperature operation range of  $-10$  to  $+60$  degrees C in accordance with FIA regulations. Users should ensure that where high temperatures are anticipated adequate provision is made to locate the system away from high temperature sources (exhaust, catalyst, etc) and if necessary fit reflective insulation around the cylinder.

**BEFORE EVERY EVENT CHECK SYSTEM CONTENTS, NOZZLES ARE CLEAN AND ALL CONNECTIONS ARE SECURE**



FES1800EK

Fire Extinguisher Valve Co Ltd  
Unit 10, Ford Lane Business Park, Ford Lane, Ford, Nr Arundel, West Sussex, BN18 0UZ,  
Tel + 44 (0) 1243 55 55 66 Fax + 44 (0) 1243 555 660

# F.E.V. CONTROL BOX

## INSTRUCTIONS

The Control Box is supplied with 3 cables. One of these is terminated with a 3-pin plug for connection to the Remote Gas Charge Cartridge on remote systems or the Firing Head on pressurised systems. The other 2 cables are not terminated and are for connection to the External and Internal Control Button Switches. Either cable can be connected to either type of switch.

## Setting Up The System

On the control box a 3-position switch selects the function with centre being OFF. The up position is TEST and down position ARM.

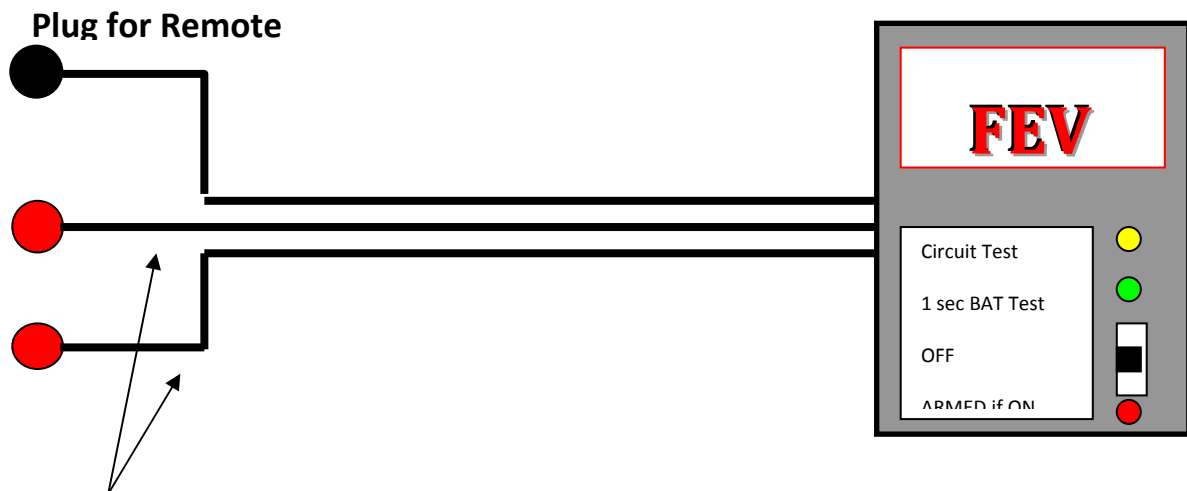
### Switch to the test position.

Observe that the GREEN LED comes ON for about 1 second and then goes OFF. This signifies a good battery, if the GREEN LED fails to come ON then the PP3 battery must be exchanged for a new one.

At the same time the YELLOW LED should be ON. If the FIRE BUTTON is now pressed the yellow led will go OFF signifying a good circuit.

## Switch To The Armed Position

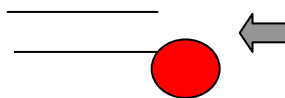
In the armed position and if the system is ready then the RED LED will be ON. If either the wiring or firing detonator is faulty or the detonator is either not there or has already fired, then the LED will not light. There are two 1.2 Metre wires coming from the unit, either or both should be connected to firing push button switches of the users choice. Making the circuit between the two wires, coloured red and blue WILL cause the extinguisher to FIRE.



### Wires for Two Fire! Buttons

*Fit a single pole push button on each wire, (Red and Blue conductors).  
If only one button is required then cut back and ensure red and blue conductors are isolated*

Red  
Blue

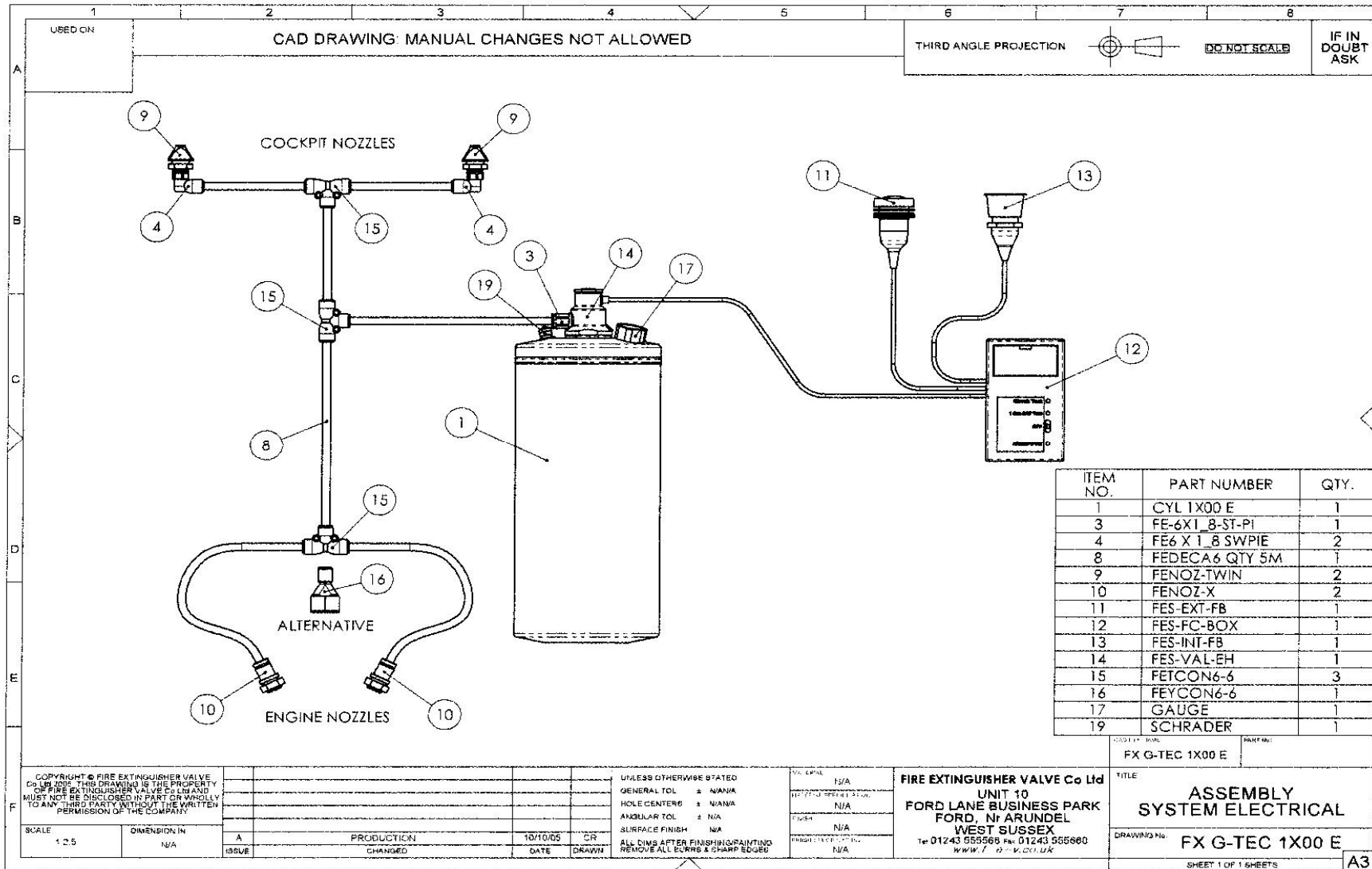


Push to FIRE!

isher Valve Co Ltd

Unit 20, Ford Lane Business Park, Ford Lane, Ford, Nr Arundel, West Sussex, BN18 0UZ,

Tel + 44 (0) 1243 55 55 66 Fax + 44 (0) 1243 555 660



FES1800EK

Fire Extinguisher Valve Co Ltd

Unit 10, Ford Lane Business Park, Ford Lane, Ford, Nr Arundel, West Sussex, BN18 0UZ,  
Tel + 44 (0) 1243 55 55 66 Fax + 44 (0) 1243 555 660