



FES1800M

Mechanical Plumbed-In Fire Extinguisher System Installation Instructions

This is an FX G-TEC 1800M +ADS Advanced Discharge System - homologated gas fire extinguisher system. To maintain optimum performance all systems should be serviced every two years.

IMPORTANT Please read the following before commencing any installation.

1. Do not connect pull cables to the extinguisher until you have completed the entire installation.
2. Check cables for free movement before final connections are made.

KIT CONTENTS

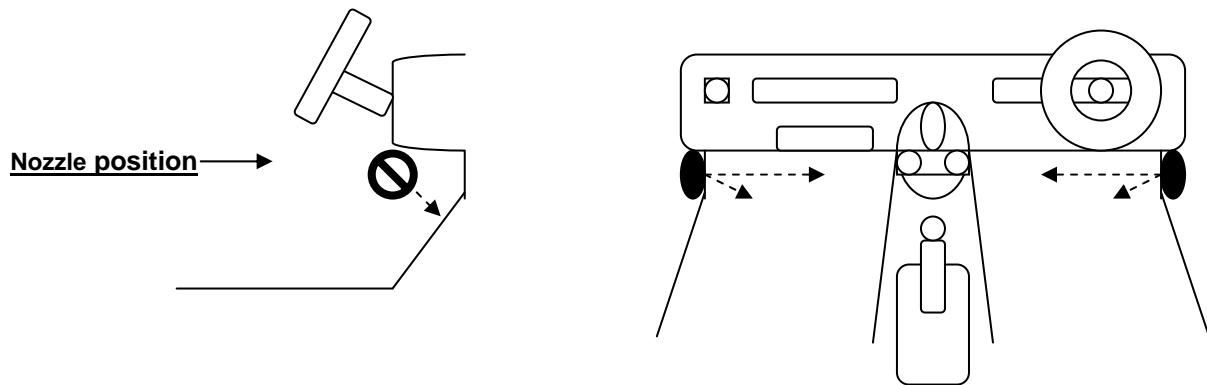
Qty	Description	Drawing Item No	Part No
1	Cylinder	2	CYL-IX00-M
1	Pull Cable 12ft	4	FE-PC-12
1	Pull Cable 6ft	5	FE-PC-6
1	6mm Tubing 5mtr	10	FE-DECA-6
2	Cockpit Nozzle Colour Code (Silver)	11	FE-NOZ-TWIN
2	Engine Nozzle	12	FE-NOZ-X
3	Tee Connector 6-6	13	FE-TEE-CON-6-6
1	Y Connector 6-6 Optional	14	FE-Y-CON-6-6
2	Cable nipples		
1	'E' Label		
8	Tube clips		

INSTALLATION INSTRUCTIONS

1. **BOLT** the cylinder-mounting cradle to the vehicle structure **SECURELY**.
2. Mount the pull cables to enable operation in accordance with current regulations. One inside the vehicle within easy reach of the driver (and co-driver where applicable) and one on the outside adjacent to the electrical cut out switch. Apply the E decal label adjacent to the external pull cable.
3. **PLUMBING** – IMPORTANT Please note 6mm piping supplied fits into various fittings in accordance with assembly drawing no FX G-TEC IX00M ensure that all push in connections are secure. Note that the supply from the mechanical valve should enter the centre branch of the T connector and exit the two outlets of the T connector into the two centre branches of the two T connectors the two outlets of each T connector then supply two engine nozzles and two cockpit nozzles.

Engine Nozzles should be positioned to enable the spray cone to cover areas at most risk, for example the engine fuel system and turbo. If in doubt ask your local MSA/FIA scrutineer to advise. Hole size for nozzle 12.5mm Diameter.

Cockpit Nozzles as Homologated Mount two cockpit nozzles on the front door pillars pointing horizontally towards the centre of the car, just below the bottom line of the dashboard. Each nozzle has two colour coded jets (Silver), angle each nozzle at 45°, one jet pointing horizontally across the car towards the centre, the other jet point into the footwell at 45° to the horizontal. Hole size for nozzle 13.5mm Diameter.



THIS IS A SAFETY ITEM! CHECK YOUR INSTALLATION CAREFULLY! IF IN DOUBT ASK!

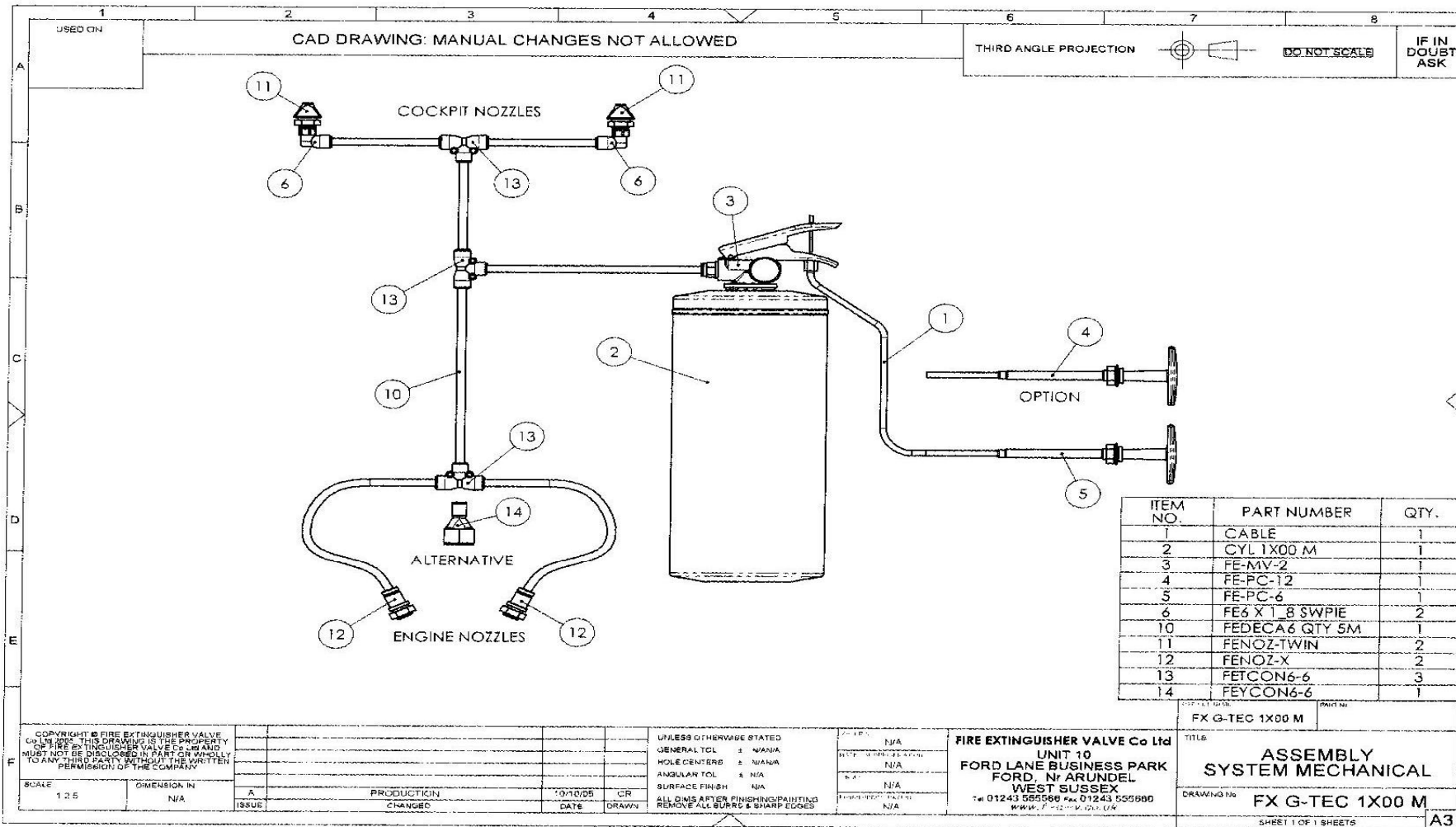
Please Note: FEV FX G-TEC systems are tested and rated for a temperature operation range of -10 to +60 degrees C in accordance with FIA regulations. Users should ensure that where high temperatures are anticipated adequate provision is made to locate the system away from high temperature sources (exhaust, catalyst, etc) and if necessary fit reflective insulation around the cylinder.

BEFORE EVERY EVENT CHECK SYSTEM CONTENTS, NOZZLES ARE CLEAN AND ALL CONNECTIONS ARE SECURE



FES1800MK

Fire Extinguisher Valve Co Ltd
Unit 10 Ford Lane Business Park, Ford Nr Arundel, West Sussex BN18 OUZ
Tel + 44 (0) 1243 55 55 66 Fax + 44 (0) 1243 555 660



FES1800MK

Fire Extinguisher Valve Co Ltd
 Unit 10 Ford Lane Business Park, Ford Nr Arundel, West Sussex BN18 OUZ
 Tel + 44 (0) 1243 55 55 66 Fax + 44 (0) 1243 555 660