

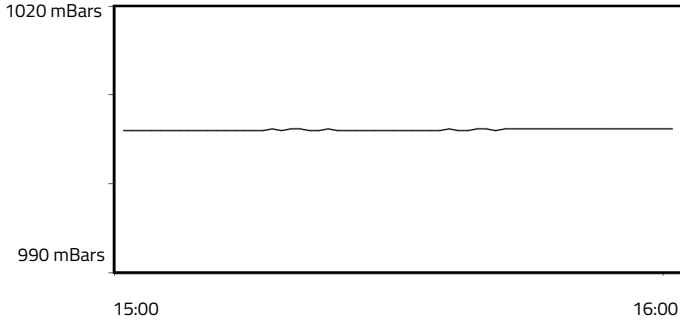


FORMULA 1 LENOVO JAPANESE GRAND PRIX 2023 - Suzuka

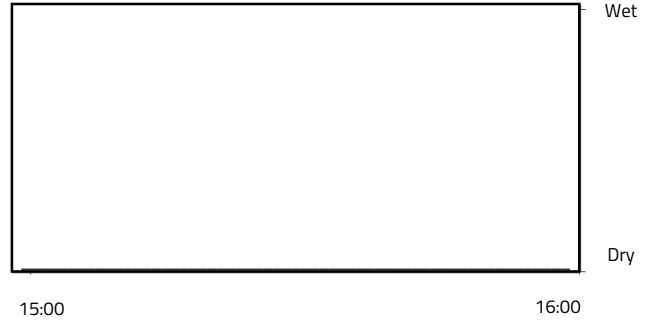
Weather Report - Friday 22 September 2023

AIR PRESSURE

Maximum: 1006.2 mBars Minimum: 1006 mBars

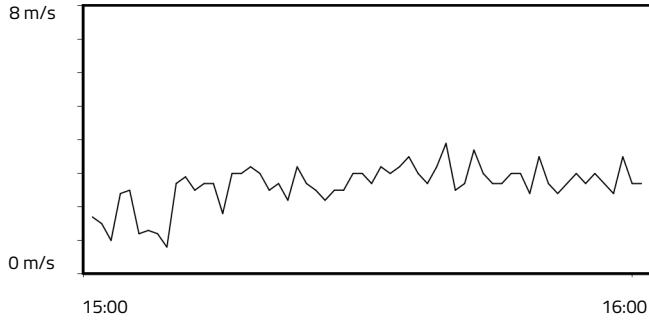


RAINFALL

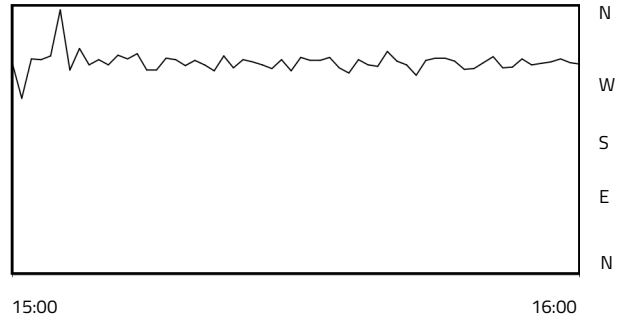


WIND SPEED

Maximum: 3.9 m/s Minimum: 0.8 m/s

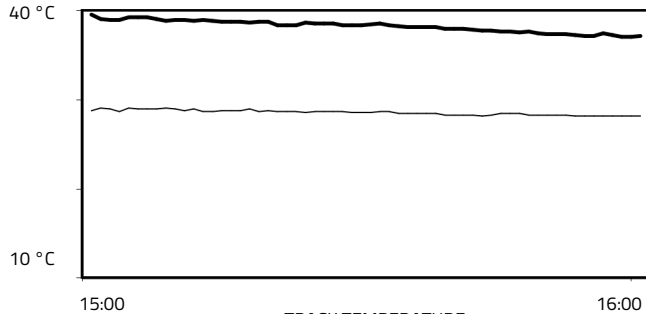


WIND DIRECTION



TEMPERATURE

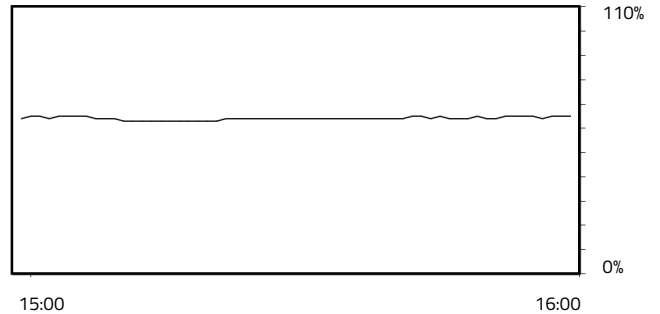
Air Maximum: 29.1°C Air Minimum: 28.2°C
Track Maximum: 39.6°C Track Minimum: 37.1°C



— TRACK TEMPERATURE
— AIR TEMPERATURE

RELATIVE HUMIDITY

Maximum: 65.0% Minimum: 63.0%



Weather Data Supplied by FIA