

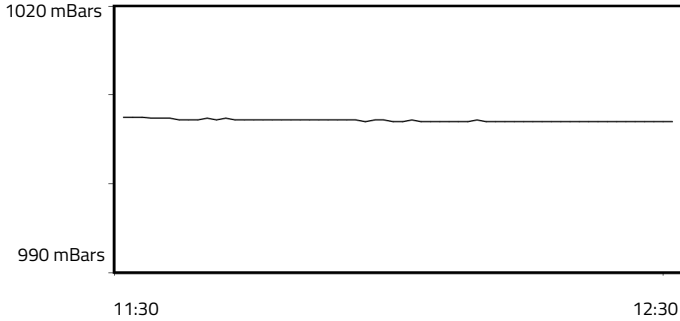


**FORMULA 1 LENOVO JAPANESE GRAND PRIX 2023 - Suzuka**

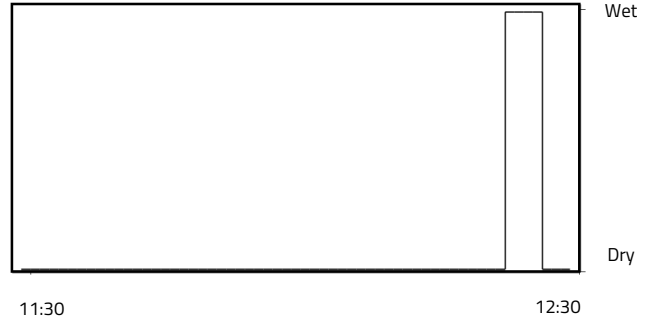
**Weather Report - Friday 22 September 2023**

**AIR PRESSURE**

Maximum: 1007.5 mBars Minimum: 1007 mBars

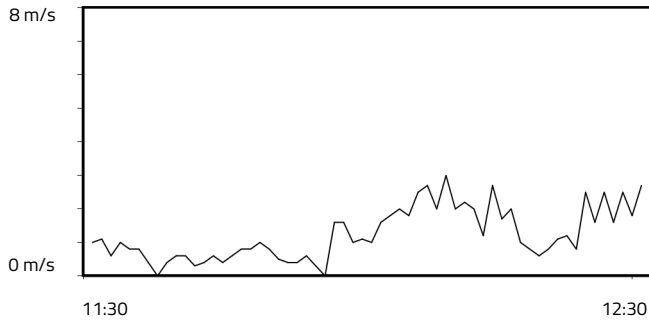


**RAINFALL**

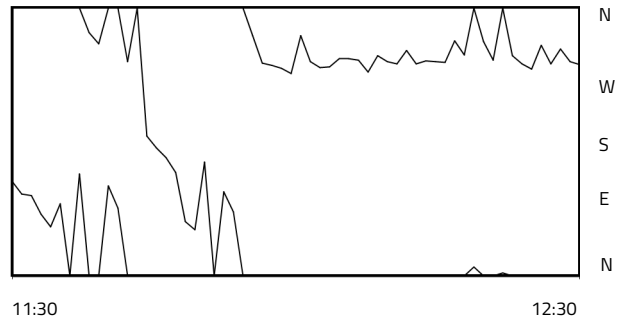


**WIND SPEED**

Maximum: 3.0 m/s Minimum: 0.0 m/s

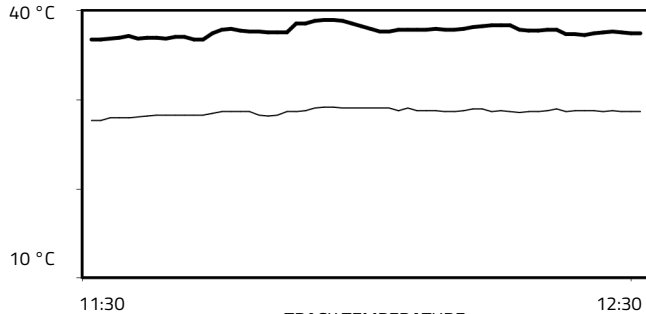


**WIND DIRECTION**



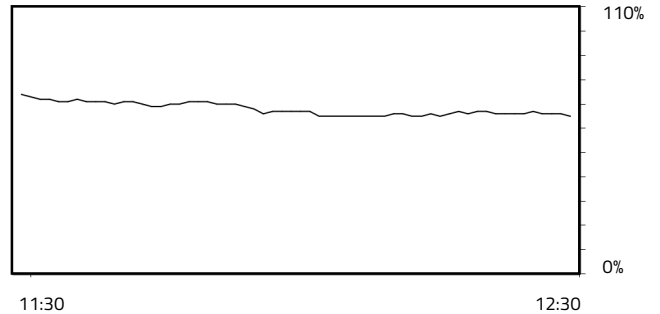
**TEMPERATURE**

Air Maximum: 29.2°C Air Minimum: 27.7°C  
Track Maximum: 39°C Track Minimum: 36.8°C



**RELATIVE HUMIDITY**

Maximum: 74.0% Minimum: 65.0%



— TRACK TEMPERATURE  
— AIR TEMPERATURE

Weather Data Supplied by FIA