

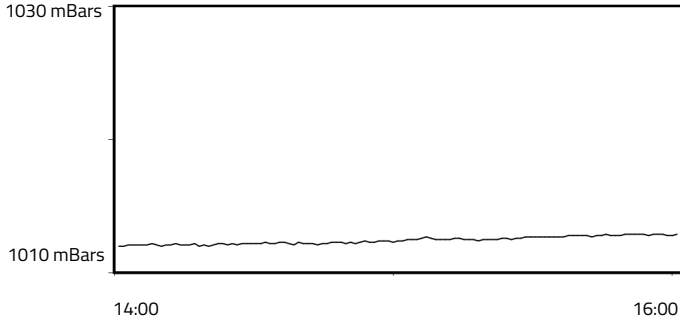


# FORMULA 1 MSC CRUISES JAPANESE GRAND PRIX 2024 - Suzuka

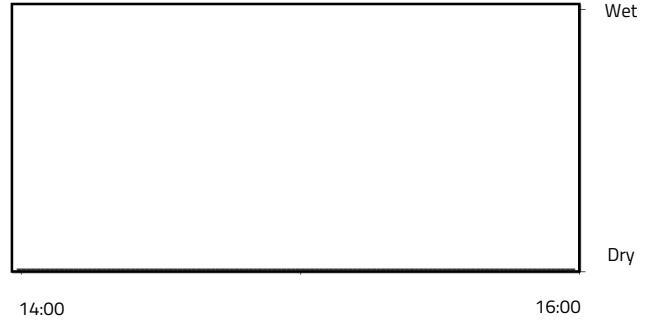
## Weather Report - Sunday 7 April 2024

### AIR PRESSURE

Maximum: 1012.9 mBars Minimum: 1012 mBars

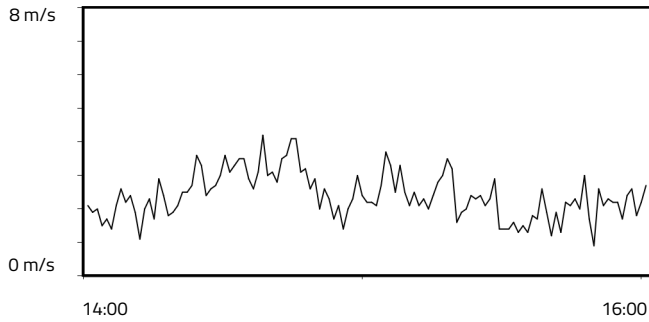


### RAINFALL

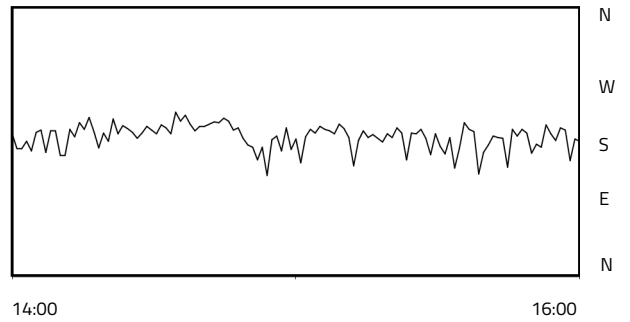


### WIND SPEED

Maximum: 4.2 m/s Minimum: 0.9 m/s

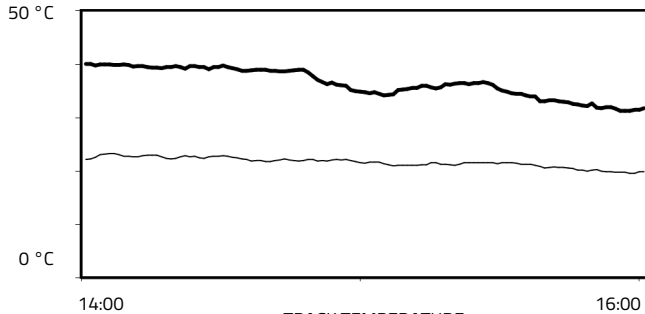


### WIND DIRECTION



### TEMPERATURE

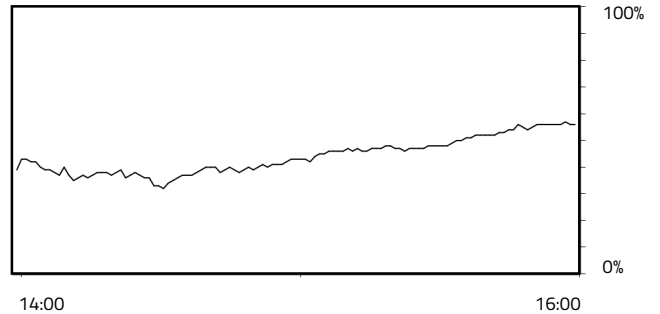
Air Maximum: 23.3°C Air Minimum: 19.6°C  
Track Maximum: 40.1°C Track Minimum: 31.3°C



— TRACK TEMPERATURE  
— AIR TEMPERATURE

### RELATIVE HUMIDITY

Maximum: 57.0% Minimum: 32.0%



Weather Data Supplied by FIA